

HARDWARE AND SOFTWARE REQUIREMENTS:

For a proper functioning of Kaspersky Internet Security, a computer should meet the defined requirements.

General requirements:

- 500 MB free disk space.
- CD / DVD-ROM (to install Kaspersky Internet Security from the distribution CD).
- Internet connection (to update databases and application modules).
- Microsoft Internet Explorer 6.0 or higher.
- Microsoft Windows Installer 2.0

Operating systems:

- Microsoft Windows XP Home Edition (Service Pack 3 or higher)
- Microsoft Windows XP Professional (Service Pack 3 or higher)
- Microsoft Windows XP Professional x64 Edition (Service Pack 3 or higher)
 - Intel Pentium 300 MHz processor or higher (or a compatible equivalent)
 - 256 MB free RAM
- Microsoft Windows Vista Home Basic (32/64 Bit) (Service Pack 2 or higher)
- Microsoft Windows Vista Home Premium (32/64 Bit) (Service Pack 2 or higher)
- Microsoft Windows Vista Business (32/64 Bit) (Service Pack 2 or higher)
- Microsoft Windows Vista Enterprise (32/64 Bit) (Service Pack 2 or higher)

- Microsoft Windows Vista Ultimate (32/64 Bit) (Service Pack 2 or higher)
 - Intel Pentium 1 GHz 32-bit (x86) / 64-bit (x64) processor or higher (or a compatible equivalent)
 - 1 GB free RAM
- Microsoft Windows 7 Home Premium (32/64 Bit)
- Microsoft Windows 7 Professional (32/64 Bit)
- Microsoft Windows 7 Ultimate (32/64 Bit)
 - Intel Pentium 1 GHz 32-bit (x86) / 64-bit (x64) processor or higher
 - 1GB free RAM (32-bit); 2 GB free RAM (64-bit).

INSTALLATION:

Please Check Windows version and process Windows Update:

- ✓ Before installing Kaspersky 2011 Product, please check and update users' Windows to latest version.

Please uninstall old version of Kaspersky Product and other brand of Anti-Virus software:

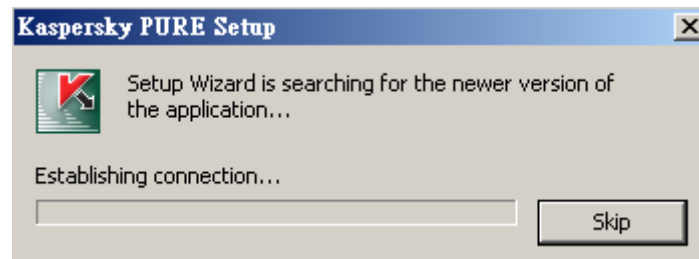
- ✓ Please note that the latest version of Kaspersky 2011 Product is not compatible with old version of Kaspersky Products or any other anti-virus program. To avoid occurrence of any un-expectable failure or system crashes, please uninstall other anti-virus programs and affiliated utilities. (Suggested to be removed by its own uninstaller)

Please Check Windows system time and date:

- ✓ Before installing Kaspersky 2011 Product, kindly make sure the windows system time and date is correct as incorrect system time and date could affect the activation and operation of Kaspersky 2011 Product.

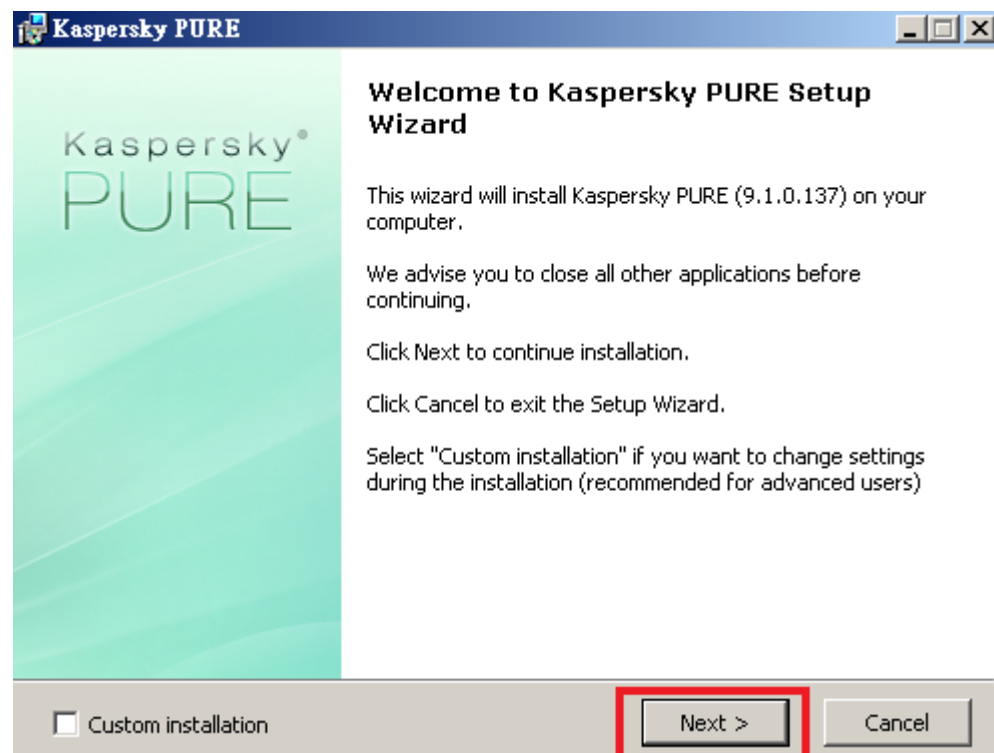
Step 1: The installation process starts automatically after the “**Installation CD**” being inserted into the CD-ROM drive and the **<Install>** button being clicked.

Installation process checks if there is a newer version online and downloads it if needed.

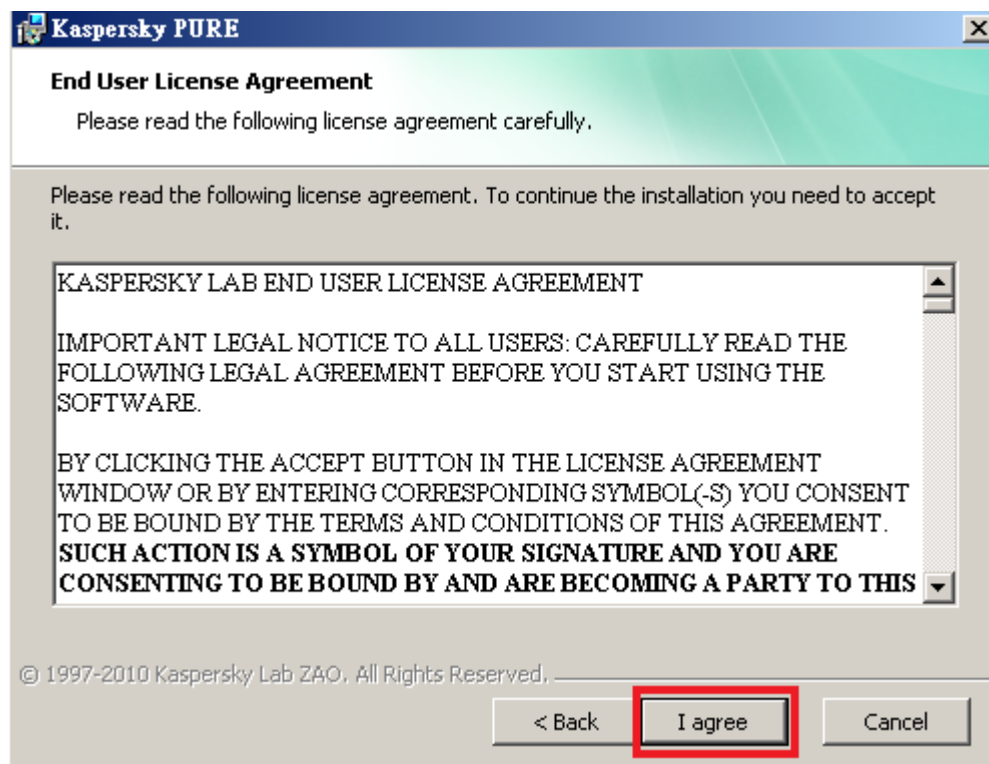


Wait a few seconds. The **Setup Wizard** will open.

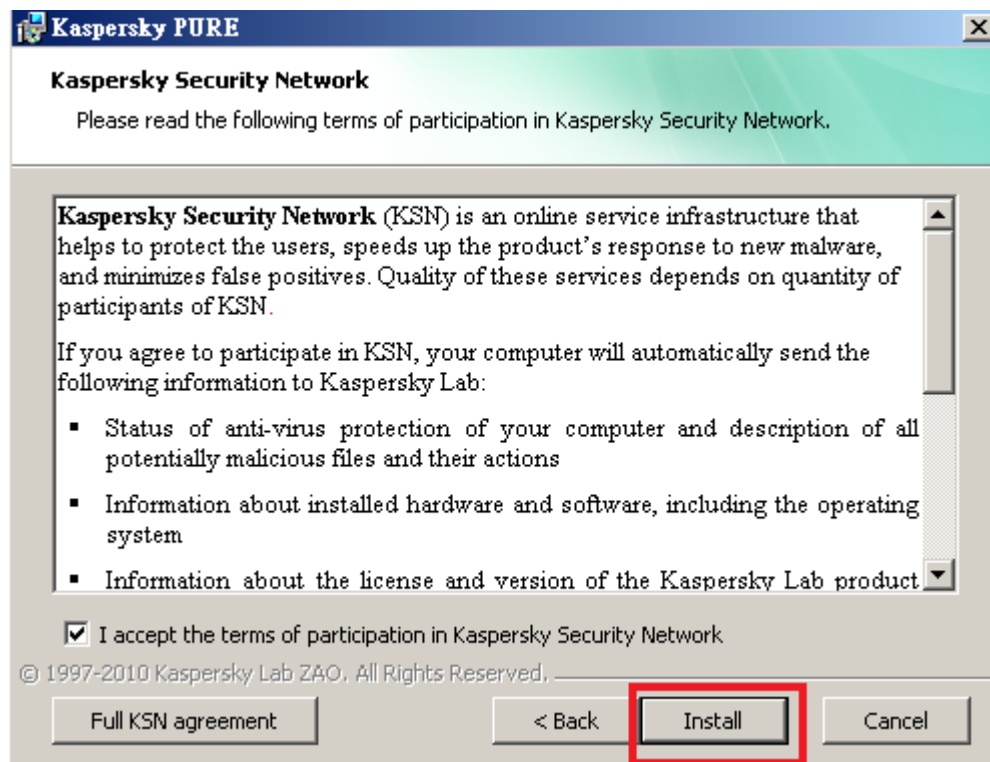
Step 2: In the **welcome window** of the Setup Wizard, click the **<Next>** button to start the **Express installation**.



Step 3: Read the license agreement. If you agree with all the terms, click the **<I agree>** button. The installation continues.



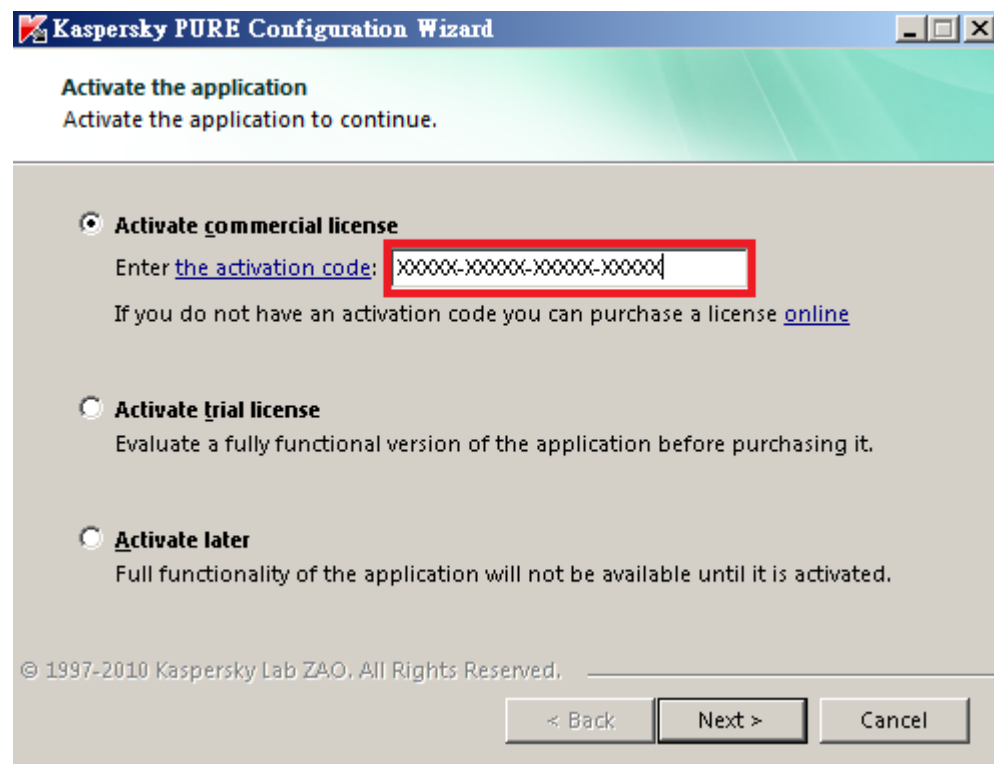
Step 4: The **Setup Wizard** offers participation in the **Kaspersky Security Network**. If you chose to participate in the program, Kaspersky Lab will receive information about new threats detected on your computer by Kaspersky PURE, which sent with identification specified for your computer and **your personal data is not collected**. Read the Data Collection Statement about using Kaspersky Security Network. If you agree with all the terms, tick **I accept the terms of participation** in Kaspersky Security Network. Click the **<install>** button. The installation continues



Step 5: Once the program features are copied and the modules are registered, the **Setup wizard** suggests activating **Kaspersky PURE**

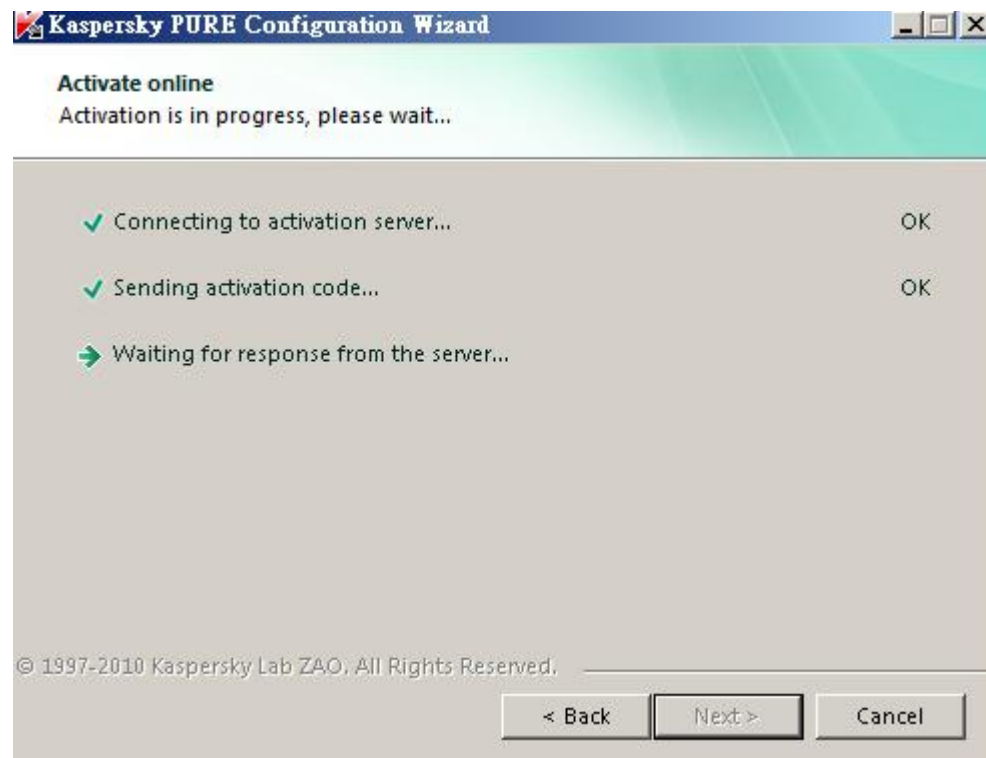
In order to activate a commercial version of **Kaspersky PURE**, please select **activate commercial license**.

In the **Activation code** field enter the activation code you got when purchasing the license. Activation code should be entered with keyboard using Latin letters only without any hyphens. The program calculates the number of entered symbols and will insert hyphens automatically.

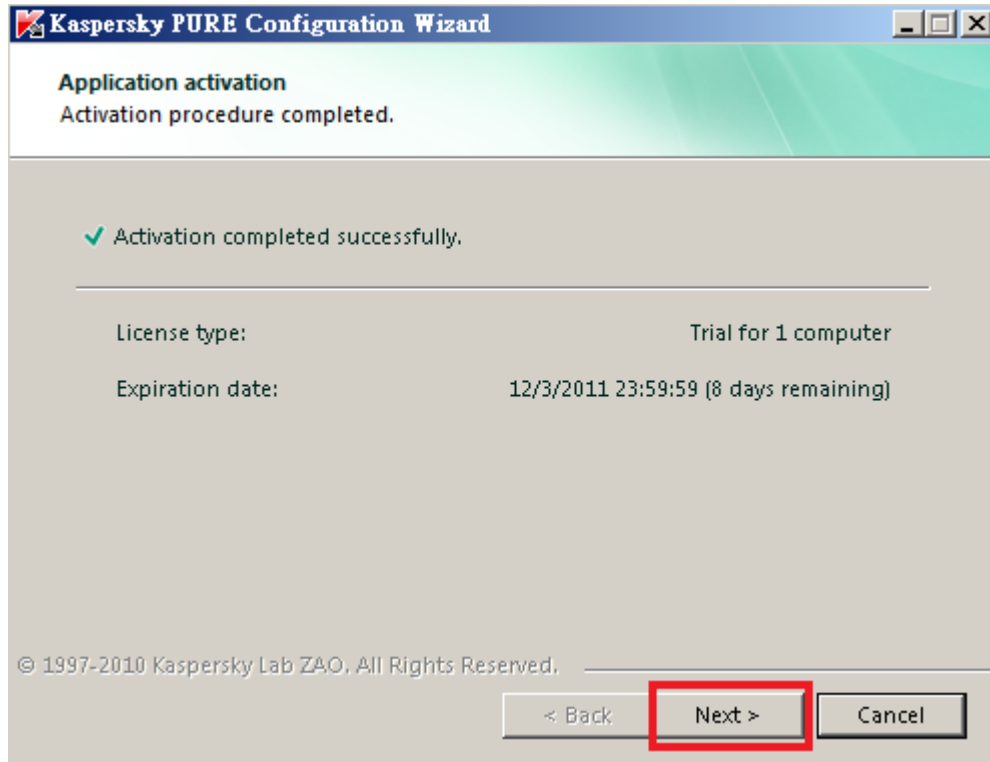


NOTE: Please make sure your computer is properly connected to the internet .

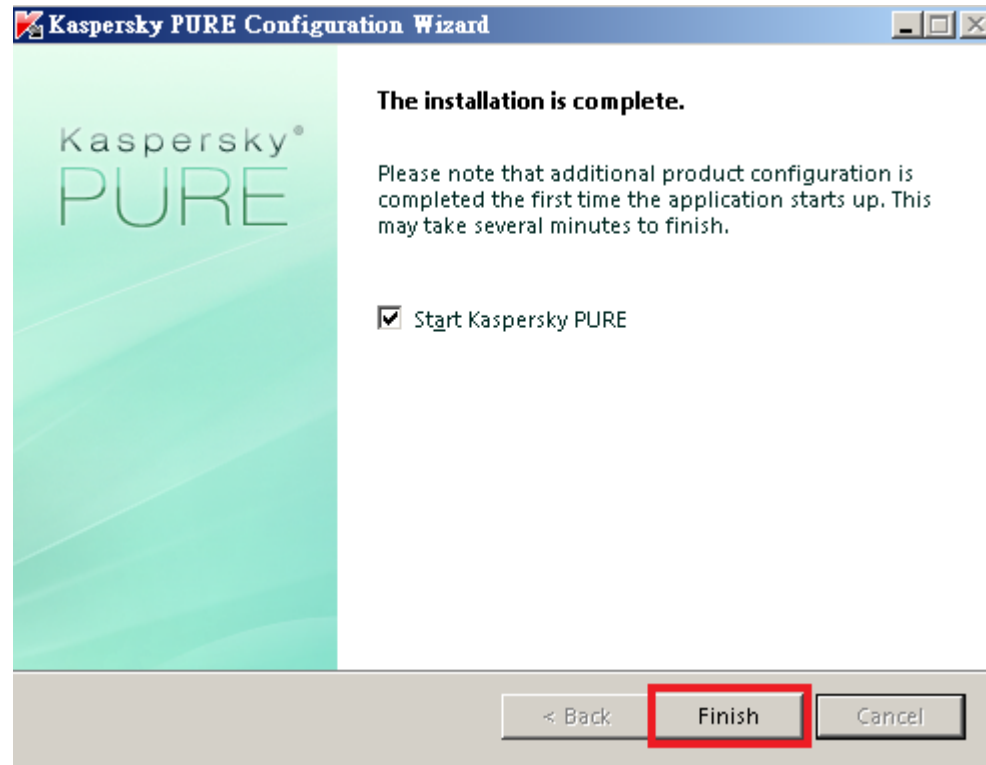
Step 6: The **Setup Wizard** will connect with the Kaspersky Lab server and download a license key file. Please wait when the wizard is activating your **Kaspersky PURE**



Step 7: When the license is activated, you will see the License type and Expiration date. Click **<Next>**



Step 8



The installation and activation processes are now completed. Click **<Finish>** to launch **Kaspersky PURE**

Thank you!

For detailed program instruction, please read the Kaspersky e-menu in the Kaspersky installation CD or contact our technical hotline (852) 3693-4668 within office hours: Monday to Friday 9:30-18:00 or Saturday 9:30-13:00 or email to support@kaspersky.com.hk